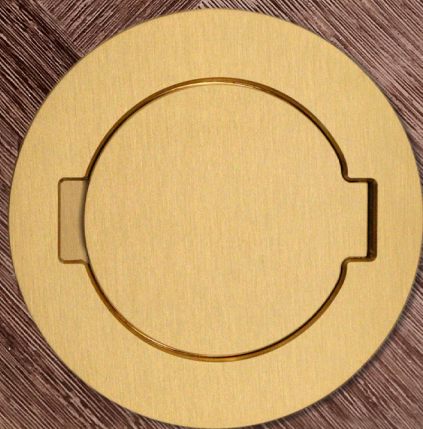


# ARPI

Floor Sockets by **Lithoss**



# TAIL

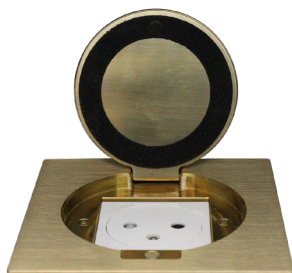
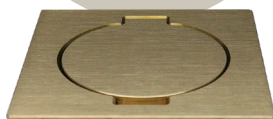
IP64



## ARPI TAIL SQUARE

code aanpassen.

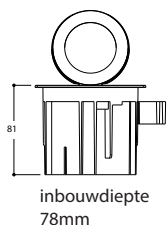
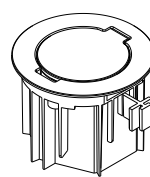
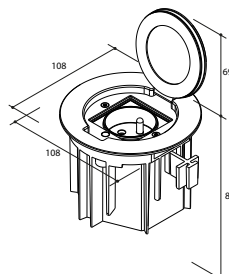
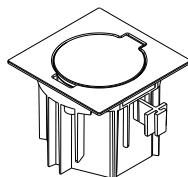
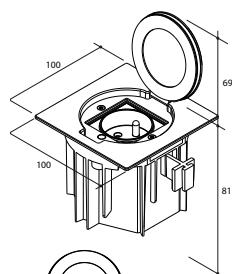
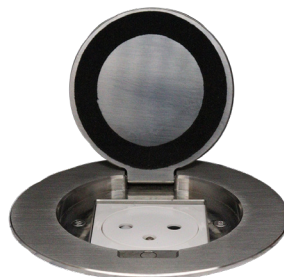
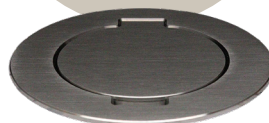
Eerste twee  
cijfers ->AR41



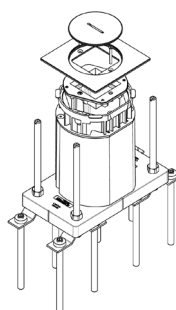
## ARPI TAIL ROUND

code aanpassen.

Eerste twee  
cijfers ->AR42



- inbouwdoos inbegrepen.
- inbouwdoos verschillend van IP64 / IP66 met schroefdoop.
- installatie in alle soorten vloeren.
- compatibel met de Arpi Level Support.



De verschillende inbouwscenario's zijn te vinden op de Arpi Tail installatiefiche.